

An aerial photograph of a courtyard at Hotel Palácio dos Ferrazes in Porto. The courtyard is a green lawn with several black metal chairs and small tables arranged for outdoor seating. The surrounding walls are made of light-colored stone blocks. On the left, there are large glass windows and doors leading to the hotel rooms. On the right, a building with a red-tiled roof and a decorative orange wall is visible. A yellow semi-transparent box is overlaid on the right side of the image, containing the company's presentation text.

COMPANY'S PRESENTATION

Managing and coordinating construction developments since 1987

Hotel Palácio dos Ferrazes, Porto

OUR ACTIVITY



FICOPE, Lda. was established in 1987.

At the moment is active in Portugal and Brazil, being present in Cabo Verde and Angola.

The company's head office is in the Lisbon area, in Paço de Arcos, Council of Oeiras, and there is also an office in the North of the Country, in Oporto.

Lisbon: Rua Armando Cortez, 1, 4.º A - Paço de Arcos
Oporto: Av. dos Heróis e Mártires de Angola, 59, Bloco B, esc. 310



Horácio Preto

Managing Partner

+351 936 150 351
hpreto@fcope.pt



Paulo Consciência

Managing Partner

+351 966 150 350
pconsciencia@fcope.pt

MANAGING PARTNERS

FICOPE is run by two Civil Engineers licensed in the Instituto Superior Técnico of Lisbon in the branch of Structures, and these are the sole shareholders and managers since its foundation.

Both Directors are Specialist Members of Construction Management of the Order of Engineers.

The company's founders initiated its activity through their multi-disciplinary experience acquired in the labour market.

**João Pedro Preto**

Director

jpreto@fcope.pt

**Vasco Consciência**

Director

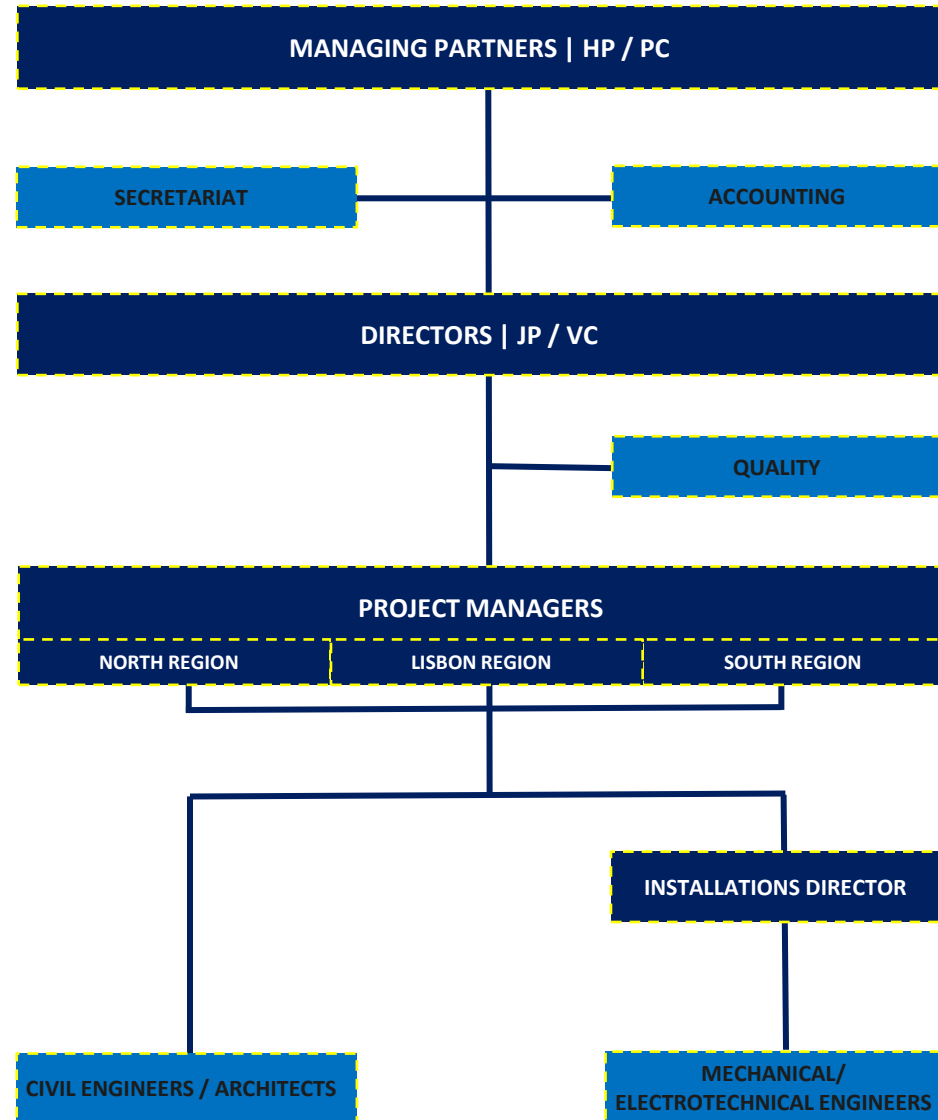
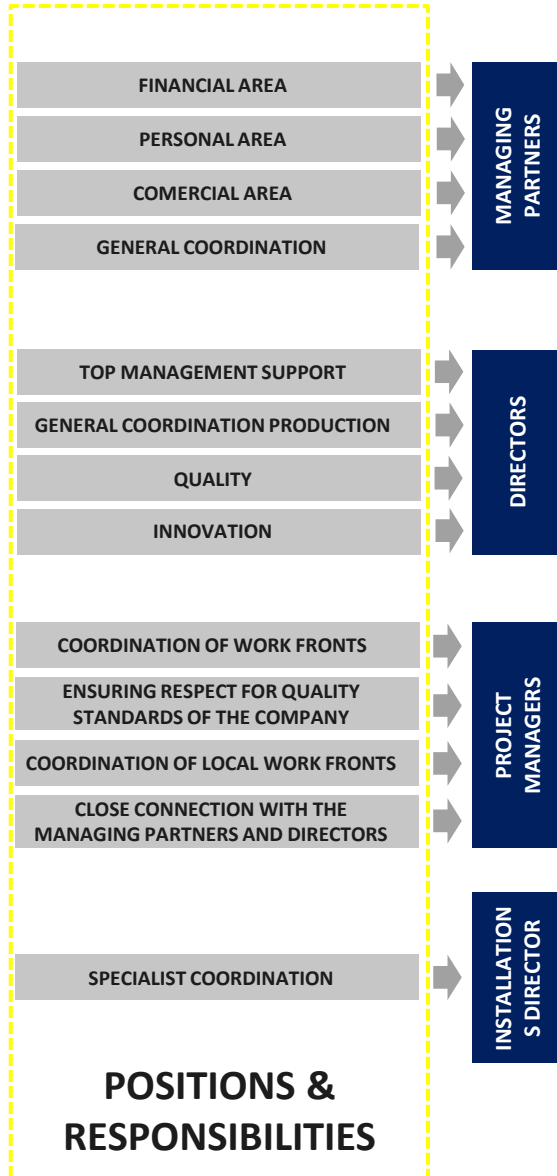
vconsciencia@fcope.pt

DIRECTORS

The two Civil Engineers, João Pedro Preto and Vasco Consciência, graduated from the Faculty of Sciences and Technology – Universidade Nova de Lisboa, and from the Instituto Superior Técnico de Lisboa, respectively, are Directors of FICOPE, supporting top management and assuming the role of senior project managers.

Both started their activity in relevant national« and foreign companies in the construction sector.

After more than 10 years of professional experience, in 2017, they joined the FICOPE staff.



PROJECT MANAGERS



**Renato
Ventosa**



**Estefânia
Henriques**



**Jorge Seia
Araújo**



Sónia Viegas



**Joaquim
Soares**



**Luís
Peixoto**



**Dino
Miranda**



**Manuel
Henriques**



**Paulo
Alle**



**Maria João
Gomes**



**Henrique
Antunes**



**Luís Moreira
Gomes**



Paulo Duarte

**Hugo
Neves**

**Nuno
Leitão**

**Fernando
Cardoso**

FICOPE has a team of highly experienced Project Managers

TRACING OUR HISTORY

Since its foundation, FICOPE has been dedicated to the fields of perfectly clear engineering services, particularly: Engineering Projects Development, Technical Consulting, Works Coordination and Supervision.



During the 1990's decade, the company decidedly started off its expansion phase, widening its scope of Clients and delivering many important enterprises in the councils of Lisbon, Aveiro and Faro, namely office, residential, hotel, industrial and commercial buildings.

Between 2000 and 2008, **FICOPE** consolidated its presence in the national market, becoming one of the main companies in Portugal of project management in the private sector.

FICOPE's activity expanded to the Madeira Island, as well as the neighboring Spain. In 2007 it initiated its activity in Angola, in 2009 in Cape Verde, in 2010 in Mozambique and in 2011 in Brazil.

TRACING OUR HISTORY

FICOPE has gradually increased its influence scope in the national and international market, currently presenting a relevant segment of Clients in the private sector, and less prominent in the public sector, assuming technical liability for some of the major developments in this Country.



FICOPE celebrated its 30th anniversary in 2017 with an event where many Clients, Partners and Collaborators were present.

At the end of 2020, even in the middle of a pandemic, **FICOPE** moved their headquarters to a larger and more modern space, with all the conditions for the team to face the challenges of the coming years.

FICOPE will celebrate its 35th anniversary in 2022 at an event to be scheduled in July.

FICOPE is at the moment a pluri-disciplinary company of project management, with a strong presence in the real estate market.

FICOPE is a member of the RLB Euro Alliance, an established network of partner organizations across Europe, committed to delivering high quality services.

About the RLB Euro Alliance

Sourcing accurate, up-to-date construction costs in Europe can be a challenge. With 50 countries, 26 currencies and 35 languages, Europe boasts an incredible diversity that can be difficult to manage. In addition, the manner in which projects are handled can vary greatly from one country to the next.

In 2009, Rider Levett Bucknall embarked on a project to unify all European construction costs in a single online database. Recognizing that quality and local expertise were the keys to success, RLB approached the leading cost engineering firms in key countries throughout Europe. These firms became the first partners in a revolutionary collaboration between European construction cost specialists: the RLB Euro Alliance.

Since then, the RLB Euro Alliance has grown steadily, adding valuable local cost information and real-world experience to the ever-expanding network.

- 18 local partners;
- Over 4.000 cost specialists worldwide;
- 18 European countries in one database;
- 25 offices across Europe.

Commitment to quality

With over 4.000 staff spread out across the globe at more than 120 regional offices, Rider Levett Bucknall understands the importance of quality. Strict entry requirements for the RLB Euro Alliance ensure that each new partner meets and maintains the highest professional standards.

At the same time, industry-specific expertise that was once unique to certain countries and regions is now available to all partners, enabling the RLB Euro Alliance to offer a wider range of insights to its clients.

[MEET OUR PARTNERS](#)


Our partners throughout Europe

The RLB Euro Alliance was founded to provide in-depth insights into construction costs throughout all of Europe. In order to guarantee accuracy and relevance, the online cost database operated by ECC is updated regularly with new information from our local partners.

As leading European construction cost specialists, the partners in the RLB Euro Alliance have the expertise and experience necessary to advise you on any construction projects or investments you may be considering.

Would you like to get in touch with one of our local partners? Simply select the country and discover what the RLB Euro Alliance has to offer.






















18 Partners

4000 specialist worldwide

20 countries

25 offices around europe

Our partners throughout Europe

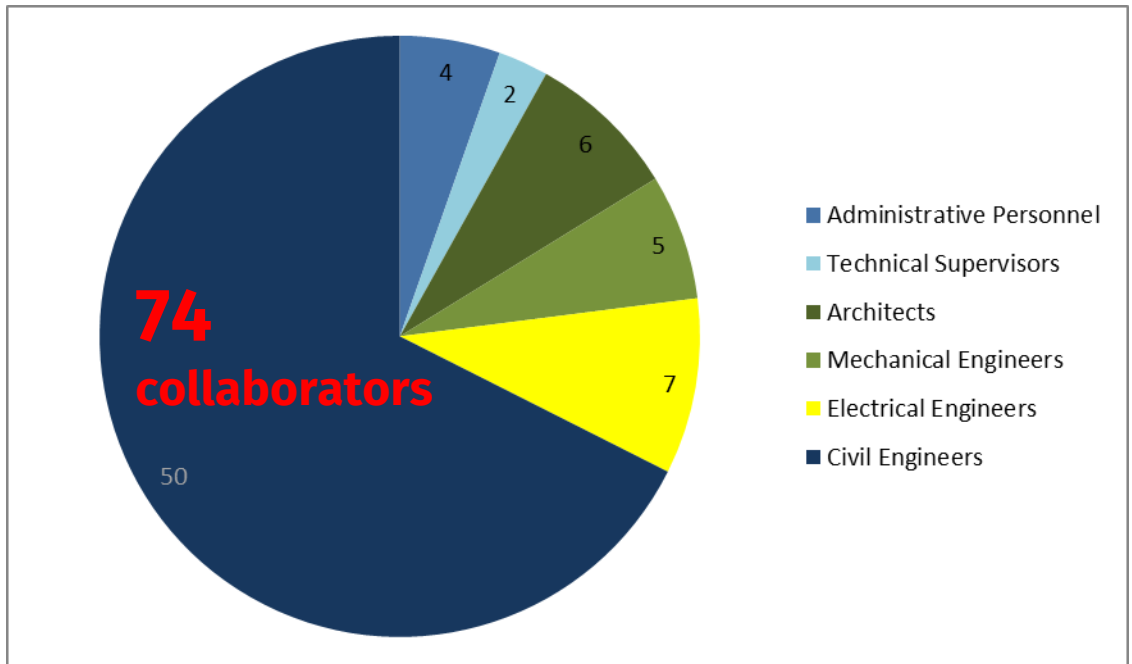
 AF Consult	 APM management
 APP-Projekt	 AS Bygganalyse
 bau-control ZT GmbH	 BEAR project management
 Bopro	 DBC Consultants
 Ficope	 FMC Laskentapalvelut Oy
 H1K Consulting	 IGG Bointon de Groot
 Kerrigan Sheanon Newman	 LDK Consultants
 MTM Project Solutions	 Proge
 Rider Levett Bucknall	 Sterling Quest Associates
 Tomlin project management KFT	



OUR TEAM

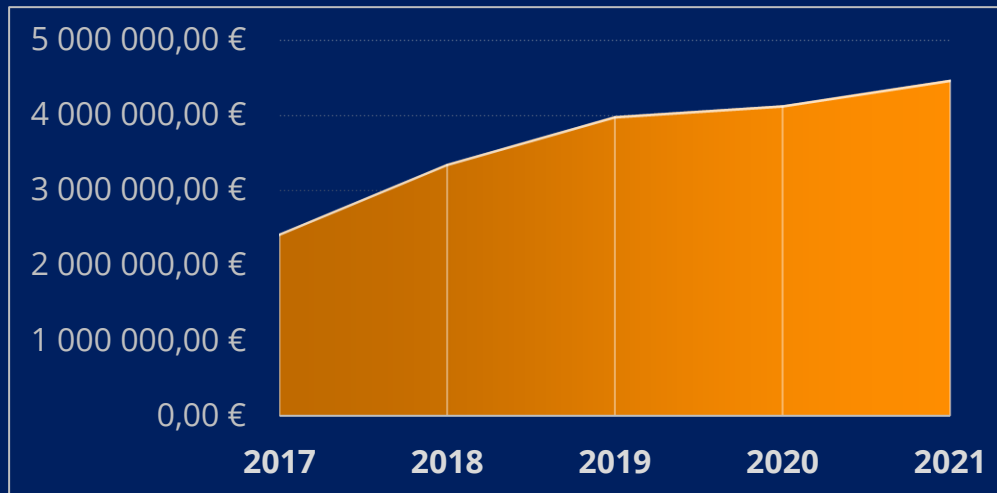
FICOPE's work force includes a highly qualified group of engineers and technicians, with a large experience in design and project management of works.

We offer the guarantee of the technical team's accumulated experience over the years. We invest in training, and bet on the team's continuity and stability.



TURNOVER

4,5 M€ of invoicing



+ 1,200M€ of works managed in the last 5 years

11 hotels in the design and construction phase

Gross area of **+ 3.500.000 m2** built

Currently managing projects worth **+800 M€** in Portugal

COORDINATION AND SUPERVISION OF WORKS

Pre-Construction Phase



Cost Estimates /
Measurements / Budgets



Licensing Monitoring and
Managing



Design Analysis



Procurement

COORDINATION AND SUPERVISION OF WORKS

Construction Phase



Quality Control



Costs Control



Planning Control



Site Supervision



Health and Safety Coordination

COORDINATION AND SUPERVISION OF WORKS

Post-Construction Phase



Technical Compilation



Handover / Commissioning



Coordination with Concessionaries



Support towards obtainment of
User License



Due Diligences



Audits / Inspections / Tests



Technical / Economical
Exequibility Studies

TECHNICAL CONSULTANCY



Design Revision



Technical Exequibility Analysis
and Preliminary Costs
Evaluation



Technical Assistance

ENGINEERING DESIGN ANALYSIS



FICOPE

DIGITAL TOOLS

Digital Platform developed by **FICOPE** with current language and *user friendly adapted to the quality sistem of the company.*



Rui Lopes (Empreiteiro)

@jganito @aferreira @sviegas @rmendes @ncamisa BAME nº19 - Resina para ancoragens

[BAME 19 - Resina_ancoragens.zip 178 MB](#)

★

06-12-2019 12:58

APROVADO (atenção entre o período de tempo entre a aplicação da resina e a colocação dos varões » max. 35 min (10 - 20°C)

★

06-12-2019 13:34

@riopes @ncamisa @jganito @aferreira @rmendes

★

06-12-2019 13:35

Dashboard

Projetos

Settings

Utilizadores

PEDIDOS ESCLARECIMENTO – PROJETO Nº

Cliente:

Empreiteiro:

Empreitada:

A B C D E

+23

Início:

Concluído:

158/172
PE
92%

197/248
PAM
79%

31/41
TM
76%

29/31
PREP
94%

PE

PAM

TM

PREP

DESENHOS

Novo PE

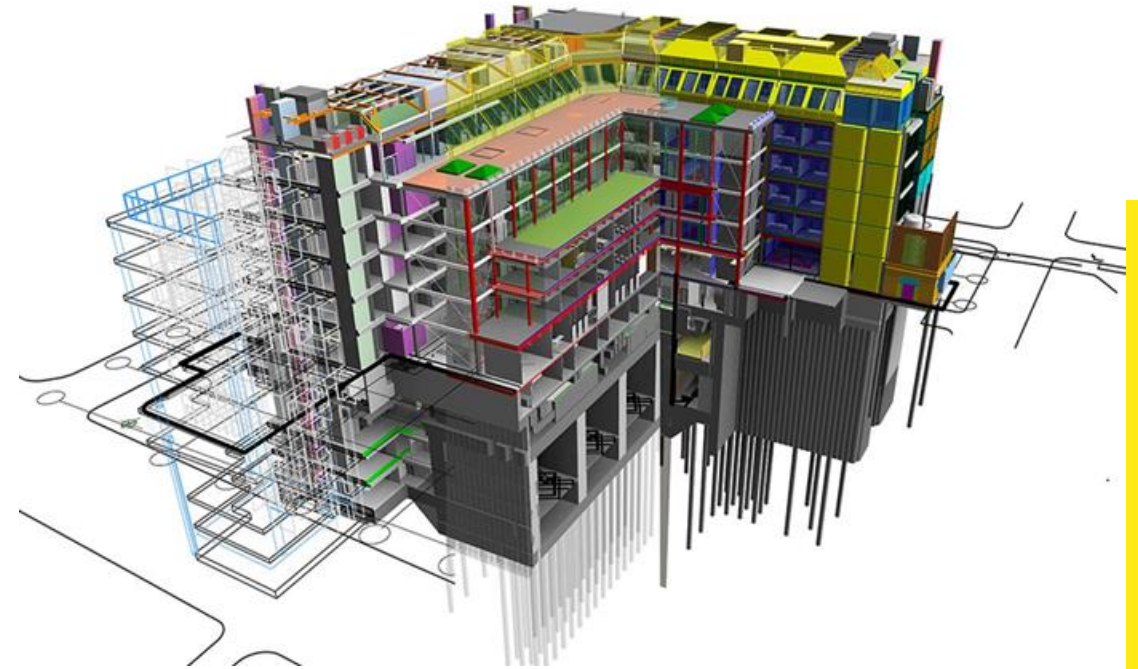
Excel

Num.	Especialidade	Descrição	Criado em	Data Objectivo	Estado	Responsavel	Data Conclusão	Observações	
					Please Ch				
PE - 001	Escação, Contenção e Estabilidade	Demolição do Troço de parede tardoz do Palácio	05-01-2021	18-01-2021	Concluído		12-02-2021 11:53		
PE - 002	Contenção e Estabilidade	Escoramento de fachada pré existente	06-01-2021	12-01-2021	Concluído		14-01-2021 23:00		
PE - 003	Arquitetura	Vãos a restaurar	06-01-2021	12-01-2021	Concluído		14-01-2021 23:02		
PE - 004	Estrutura	Ancoragens Acesso Palácio	14-01-2021	28-01-2021	Concluído		21-01-2021 11:57		
PE - 005	Demolições	Demolição e contenção fachadas	15-01-2021	20-01-2021	Concluído		26-01-2021 12:38		
PE - 006	Demolições, Estrutura, Arquitectura	Cobertura Escadaria Nobre	18-01-2021	29-01-2021	Concluído		21-01-2021 11:42		
PE - 007	Estabilidade	Reforço de cunhais	21-01-2021	29-01-2021	Concluído		15-02-2021 11:27		
PE - 009	Betão	Proj Estabilidade Parede a Demolir	03-02-2021	26-02-2021	Concluído		25-02-2021 11:05		
PE - 010	Betão	Cornija Beirado Palácio	03-02-2021	26-01-2021	Concluído		15-02-2021 11:20		
PE - 011	Betão	Paredes a Reforçar, com cantarias	03-02-2021	12-01-2021	Concluído		22-02-2021 11:30		
PE - 012	Estabilidade	Microestacas Alçado Tv Torel	03-02-2021	12-01-2021	Concluído		12-02-2021 10:41		
PE - 013	Betão	Microestacas Contenção Parede Pré existente	03-02-2021	12-01-2021	Concluído		15-02-2021 11:16		
DF - 014	Arquitetura	Maneja da Vão Interior	03-02-2021	03-02-2021	Concluído		22-02-2021 13:23		

Agility and transparency in the management of information between the various stakeholders of a project.

BIM – BUILDING INFORMATION MODELING

If the designers work in BIM, our team also has the means and technical ability to manage, plan, check and validate the project and works accordingly.



Manage, Measure, Plan and Execute since the design, through the works and finishing in the building's management.

BIM Methodology – Controlled costs, avoided mistakes, optimized and tested solutions.

OUR SECTORS



Shopping Centres



Offices



Equipment



Hotels & Resorts



Sport



Industrial



Residential



Education



Healthcare



Bank Agencies



Infrastructures



Certificado
Certificate

NÚMERO 2008/CEP.3107
Number

O Sistema de Gestão da Qualidade da
The Quality Management System of

FICOPE - FISCALIZAÇÃO, COORDENAÇÃO, PROJECTOS DE ENGENHARIA, LDA.

Rua Armando Cortez, 1 - 4º A e 4º B
2770 233 PAÇO DE ARCOS
PORTUGAL

Implementado em consultoria técnica; coordenação de projetos; coordenação e fiscalização de obras, cumpre os requisitos da norma
implemented in the technical consultancy; design coordination; site supervision and coordination, meets the requirements of the standard

NP EN ISO 9001:2015



José Leitão
CEO

Emitido em 2021-09-08
Date of issue
Válido até 2024-09-15
Valid until

APCER - Associação Portuguesa de Certificação
o/Porto Bessa Leste Complex | Rua António Bessa Leite, 1430 - 1º Esq.
4150-074 Porto
www.apcergroup.com



CERTIFICATE

APCER has issued an IQNet recognized certificate that
the organization

FICOPE - FISCALIZAÇÃO, COORDENAÇÃO, PROJECTOS DE ENGENHARIA, LDA.

Rua Armando Cortez, 1 - 4º A e 4º B
2770 233 PAÇO DE ARCOS - PORTUGAL

has implemented and maintains a

Quality Management System

for the following scope:

Technical consultancy; design coordination; site supervision and coordination

which fulfils the requirements of the following standard

ISO 9001:2015

Issued on: 2021-09-08
Expires on: 2024-09-15

This attestation is directly linked to the IQNet Partner's original certificate and shall
not be used as a stand-alone document

Registration Number: PT- 2008/CEP.3107



Alex Stoichitoiu
President of IQNet

José Leitão
APCER CEO



IQNet Partners*:
AENOR Spain AFNOR Certification France APCER Portugal CCC Cyprus CISO Italy
CQC China CQM China CQS Czech Republic Cro Cert Croatia DQS Holding GmbH Germany EAGLE Certification Group USA
FCAV Brazil FONDA NORMA Venezuela ICOTEC Colombia Inspecta Certification Oy Finland INTECO Costa Rica
IRAM Argentina JQA Japan KQF Korea MIRTEC Greece MSZT Hungary Nemko AS Norway NSAI Ireland
NYCE-SIGE Mexico PCBC Poland Quality Austria Austria RK Russia SII Israel SIQ Slovenia
SIRIM QAS International Malaysia SGS Switzerland SINAC Romania TEST SE Petersburg Russia TSE Turkey YUQS Serbia
* The list of IQNet partners is valid at the time of issue of this certificate. Updated information is available under www.iqnet-certification.com

CERTIFICADO

LABORATÓRIO NACIONAL DE ENGENHARIA CIVIL
MARCA DE QUALIDADE LNEC
CERTIFICADO N.º 14/2020
CERTIFICADO DE QUALIFICAÇÃO DE GESTOR GERAL DA QUALIDADE de empreendimentos da construção (Decreto-Lei n.º 310/90)
Com base na avaliação da Secção de Inscrição e Classificação da Comissão da Marca de Qualidade LNEC, atribuo a qualificação de GESTOR GERAL DA QUALIDADE de empreendimentos da construção à empresa
FICOPE - FISCALIZAÇÃO, COORDENAÇÃO, PROJECTOS DE ENGENHARIA, LDA.
nas seguintes categorias e classes
Edifícios e Património Construído classe 8
Vias de Comunicação, Obras de Urbanização e Outras Infraestruturas classe 7
A presente qualificação é válida até 17 de novembro de 2022
Lisboa, 17 de novembro de 2020
Comissão da Marca de Qualidade LNEC
O Presidente

(Carlos Pina)

Av. do Brasil, 935
1700-066 LISBOA
PORTUGAL
Tel: (+351) 21 844 30 00
Fax: (+351) 21 844 30 11
lneq@lneq.pt
www.lneq.pt

CERTIFICATES

Since 1997, FICOPE is certified as “General Quality Manager” by LNEC (National Civil Engineering Laboratory) with Grade 8 in the category of “Buildings and Monuments”, and Grade 7 in “Highways, Urbanization Works and Other Infrastructures” construction projects. Since 2008 FICOPE’s Quality System is also certified by APCER / IQNet according to ISO 9001 standards.



Temprano Capital Partners (Portugal)
UNIPessoal LDA

Avenida de Liberdade 38
Lisboa 1250-145
Portugal

Eng. Paulo Consciencia
Ficope
Av. Conde de São Januário, 23
2770-042 Paço de Arcos

Madrid, 16th April 2019

To whom it may concern

Temprano Capital Partners has engaged Ficope in its capacity as Project Managers to accompany us in our development program across Portugal. These 5 projects to date represent an investment in excess of €100M across almost 80,000sqm in Lisbon, Porto and Coimbra.

From the outset Ficope's input has been crucial from the earliest stages of our projects through project costings allowing thorough feasibility analysis. Thereafter Ficope have created dedicated Project teams to accompany Temprano through the planning and tendering phases of the projects as well as the creation of onsite project management teams, giving the support necessary throughout the construction phase in order to closely track the progress of works in an environment of increasing labour and construction costs and with time constrained development programs.

From the outset Paulo Consciencia, Horácio Preto and their team of dedicated professionals have always shown themselves to be flexible and available and overall have been invaluable partners in our development projects across Portugal over the past 3 years and we look forward to further and continued collaboration in the future.


Jonathan Holloway

António Ferreira de Amorim

Mozelos, 13 de Outubro de 2011

A empresa FICOPE, Fiscalização e Coordenação de Projectos tem sido um parceiro nosso cujo contributo se traduz numa mais-valia.

Os seus serviços em fase de projecto, que vão desde a análise de projectos, preparação de cadernos de encargos, lançamento de concursos e análise de propostas, têm sido particularmente importantes no resultado dos concursos que temos lançado.

Na fase de obra, o controlo de custos, prazos e qualidade têm sido decisivos para cumprimento de objectivos pré-estabelecidos no que se refere aquelas valências fundamentais para o sucesso de um empreendimento.

A experiência e dedicação que as equipas de Gestão e Fiscalização têm prestado às obras em que temos sido parceiros reduzem em muito os riscos de derrapagem de custos e prazos e são um garante de boa qualidade de execução.

Por isso mesmo, somos parceiros há quase de 20 anos em projectos que vão desde centro comerciais, hotéis, agências bancárias e edifícios residenciais, quer em Portugal, quer nos países onde estamos a investir.

Os maiores sucessos a este parceiro que queremos continue a colaborar connosco.





DECLARAÇÃO

A Ficope
Av. Conde de São Januário, 23
2770-042 Paço de Arcos

Na qualidade de Director da Seop - Groupe Eiffage em Portugal, contratei a empresa Ficope para prestar serviços de Coordenação e Fiscalização do nosso empreendimento – Barreiro Retail Planet (Retail Park nos arredores de Lisboa, com área total de construção de 68.000m2 e investimento de 25,0 M€ + Iva).

Considero que o desempenho da Ficope neste projecto foi muito bom, e não tenho dúvida em manter a Ficope como nosso parceiro em futuros projectos do Grupo, e a recomendar esta empresa a qualquer Promotor que pretenda investir em Portugal ou em países de expressão portuguesa.

Jean-Lou ROY
Director



TESTIMONIES

EXPERIENCE WITH PUBLIC OFFICIALS

Ficope, along its 34 years of existence, has established an excellent and collaborative relation with all relevant public entities, namely various municipalities highlighting Lisbon's, Oporto's and Coimbra's, DMIS, ANPC, EDP, EPAL, METRO, DGPC, CCDR, etc.

Ficope's senior partners have been involved in the direct contact with public officials and they have personal experience and relation with most of the main people responsible of these entities.





OUR MAIN CLIENTS





PORTFOLIO

Hotels and Resorts

HOTELS AND RESORTS	Client	Services provided	Cost	Gross building area (above)		Observations	Completion	Location
Phoenix Project - São Paulo Hotel	Lace	Coordination and works supervision	17,9 M€	8 569	sqmt	Conversion of existing building into Hotel of 4 floors with 80 rooms	under construction	Brasil
Phoenix Project - 24 de Julho Hotel	Lace	Coordination and works supervision	23,5 M€	12 600	sqmt	Conversion of existing building into Hotel of 8 floors with 142 rooms	under construction	Lisbon
Phoenix Project - Boavista Hotel	Lace	Coordination and works supervision	10,35 M€	5 612	sqmt	Conversion of existing building into Hotel of 6 floors with 76 rooms	under construction	Lisbon
Augusta Project Augusta Hotel & Suites	Lace	Coordination and works supervision	45,0 M€	11 760	sqmt	Conversion of existing building into a 5* Hotel of 7 floors with 169 rooms + 59 suites in 3 satellite buildings	under construction	Lisbon
Sofitel Hotel	Portis	Coordination and works supervision	1,5 M€	1 650	sqmt	Remodelling of the public zones	under construction	Lisbon
Cidadela	Grupo Reformosa	Coordination and works supervision	40,0 M€	18 000	sqmt	Demolition and construction of buildings and houses	under construction	Cascais
Sobreiras Altas Development	Assunto d'Outono, Lda	Coordination and works supervision	31,0 M€	9 496	sqmt	25 suites and 23 vilas	under construction	Melides
Tourist Village - Lot D	Quinta da Ombria	Coordination and works supervision	37,5 M€	71 500	sqmt	83 accommodation units	under construction	Algarve
Hotel do Salitre	Hermitage Castelo	Coordination and works supervision	7,0 M€	3 573	sqmt	2 buildings, Charme Hotel, Luxury, 35 Rooms	stoped	Lisbon
Bom Sucesso Hotel	Paih	Coordination and works supervision	10,0 M€	9 422		Construction of 5* hotel with 120 rooms	stoped	Óbidos
Hotel Colombo's Resort - Phase 2	ECS Capital	Coordination and works supervision	0,5 M€			51 apartments	2022	Porto Santo
Mama Shelter Hotel	AZ Architecture	Coordination and works supervision	12,0 M€	3 706	sqmt	Reconversion of existing building into a 3* Hotel with 130 rooms	2022	Lisbon
Hotel Blue	Invest. Imob. José Matias	Coordination and works supervision	4,5 M€	2 000	sqmt	Hotel in Plz Restauradores, 39 rooms	2021	Lisbon
Hotel Ludovice	Imohine	Coordination and works supervision	8,5 M€	5 680	sqmt	Luxury Hotel, 62 Rooms	2021	Lisbon
Hilton Porto Gaia Hotel	Nau Hotels	Coordination and works supervision	24,0 M€	18 650	sqmt	construction of 5* hotel with 194 quartos	2021	Vila Nova de Gaia
Central Vilamoura	Vilamoura Lusotur	Coordenação e Fiscalização	21,6 M€	13 213	sqmt		2020	Vilamoura
Hotel Vilamoura Gardens	ECS Capital	Coordenação e Fiscalização	2,4 M€	5 000	sqmt	Refurbishment 59 Rooms	2020	Vilamoura



PORTFOLIO

Hotels and Resorts

HOTELS AND RESORTS	Client	Services provided	Cost	Gross building area (above)		Observations	Completion	Location
Hotel Green	Investimentos Imobiliários José Matias	Coordination and works supervision	6,0 M€	4 088	sqmt	construction of 4* Hotel of 60 rooms	2020	Lisbon
Barracuda Resort	Itacaré Properties AB	Procurement, coordination and works supervision				Luxury resort construction	2020	Itacaré, Brazil
Hotel Palácio dos Ferrazes	Distinctability	Coordination and works supervision	6,0 M€	6 300	sqmt	Refurbishment 5* hotel - 72 Rooms	2020	Porto
Hotel do Bairro Alto	Hotel do Bairro Alto	Coordination and works supervision	35,0 M€	8 500	sqmt	Hotel extension of 39 rooms	2019	Lisbon
Vilamoura Lakes	Vilamoura Lusotur	Coordination and works supervision	66,0 M€	315 000	sqmt	Plots, infrastructures and construction	2019	Vilamoura
Vilamoura Gardens	ECS Capital	Coordination and works supervision	7,5 M€	8 800	sqmt		2019	Vilamoura
Quinta da Barrosinha	ECS Capital	Coordination and works supervision	7,0 M€	3 573	sqmt	alojamento local e ampliação	2019	Alcácer do Sal
Cascade Resort	ECS Capital	Coordination and works supervision	2,5 M€	2 000	sqmt	extension / refurbishment of restaurants, kitchen + bar	2019	Lagos
Hotel Vintage Lisboa	CS Hotels	Coordination and works supervision				construction of Hotel	2018	Lisbon
l'Orangerie	Urbisvulgo	Coordination and works supervision	7,3 M€	5 500	sqmt	Apartments and Villas	2018	Vilamoura
Hotel HILTON – Cabo Verde	Batuque	Coordination and works supervision	28,0 M€ + 3,0 M€ FF&E	15 000	sqmt	5*Hotel - 240 Rooms	2017	Cabo Verde
Hotel Ibis Guimarães	Having	Coordination and works supervision	0,5 M€			Façades refurbishment	2016	Guimarães
Mercure Batalha	Having	Coordination and works supervision	0,2 M€			Façades refurbishment	2016	Porto
Hotel Decameron	Afrexin Bank	Coordination and works supervision	55,0 M€	50 000	sqmt	Hotel 5*	2015	Cabo Verde
Hotel Palácio do Governador	Sycamor	Coordination and works supervision	5,5 M€	8 000	sqmt	60 rooms	2015	Lisbon
Hotel Lux Lisboa Pessoa	Summer Fusion	Coordination and works supervision	4,0 M€	8 200	sqmt	75 rooms	2015	Lisbon
Hotel Sana Evolution	Aziparque	Coordination and works supervision	8,0 M€	5 800	sqmt	129 rooms	2015	Lisbon



PORTFOLIO

Hotels and Resorts

HOTELS AND RESORTS	Client	Services provided	Cost	Gross building area (above)		Observations	Completion	Location
Hotel Colombo's Resort	ECS	Coordination and works supervision	10,0 M€			100 rooms, 78 apartments, 10 villas + 2 restaurants	2013	Porto Santo
Hotel Íbis Expo	Grupo Accor	Coordination and works supervision	6,0 M€	3500	sqmt	113 rooms	2013	Lisbon
Parque Norte Sul - Torres de Lisboa	Grupo Accor	Coordination and works supervision	20,0 M€	19 500	sqmt	434 hotel rooms e 119 apartments	2012	Lisbon
Hotel Europa Plaza	Alutel Grupo 3K	Coordination and works supervision	7,0 M€	6 975	sqmt	140 rooms	2011	Lisbon
Hotel Tsar	Inplaza	Coordination and works supervision	3,5 M€			78 rooms	2011	Lisbon
Vila Verde Resort	TecniciL	Coordination and works supervision	136,0 M€	150 000	sqmt	61 stores, 1262 apartments, 200.000 sqmt and gardens	2011	Cabo Verde
Resort Quinta do Lorde	Quinta do Lorde (Grupo Sousa)	Coordination and works supervision	37,9 M€	60 351	sqmt	105 hotel rooms, 99 apartments and 25 villas	2010	Madeira
Hotel Ibis Sintra	Grupo Accor	Coordination and works supervision	5,0 M€	3 763	sqmt	125 hotel rooms	2010	Sintra
Tróia Design Hotel	Amorim Turismo	Coordination and works supervision	57,0 M€	44 400	sqmt	61 luxury rooms and 144 aparts, residential suites	2009	Tróia
Hotel Ibis Alfragide	Grupo Accor	Coordination and works supervision	5,5 M€	6 000	sqmt	129 hotel rooms	2008	Lisbon
Hotel Novotel Malhoa	Grupo Accor	Coordination and works supervision	9,0 M€	10 000	sqmt	248 hotel rooms refurbishment	2007	Lisbon
Vilamoura Lake Resort	Amorim Turismo	Coordination and works supervision	34,0 M€	15 798	sqmt	202 hotel rooms and 90 apartments	2005	Vilamoura
Hotel Rural Herdade do Peral	Soc. Agrícola do Peral	Coordination and works supervision	1,4 M€	2 000	sqmt	14 guest rooms	2004	Évora
Hotel Ibis Lisboa Liberdade	Grupo Amorim - Portis	Coordination and works supervision	2,9 M€	2 500	sqmt	70 rooms	2000	Lisbon
Hotel Madrid	Grupo 3K	Coordination and works supervision	3,7 M€	3 600	sqmt	86 rooms	1998	Lisbon
Hotel Ibis Lisboa Saldanha	Grupo Amorim - Portis	Coordination and works supervision	3,9 M€	4 500	sqmt	116 rooms	1998	Lisbon
Hotel Barcelona e Edifício 3K	Grupo 3K	Coordination and works supervision	13,5 M€	5 400	sqmt	10 floor office building and 13 floor hotel, 4 basements and 120 rooms	1992	Lisbon
			Total area	975 979	sqmt			



PORTFOLIO

Office Buildings

OFFICE BUILDINGS	Clients	Provided Services	Value	Gross building area (above)		Year of conclusion	Location
Metropolis Office Buildings	Norfim	Coordination, Procurement and Supervision of Works	108 M€	80 000	sqmt	under construction	Lisbon
Cofidis Headoffice	Cofidis	Coordination, Procurement and Supervision of Works	9,0 M€	10 858	sqmt	under construction	Lisbon
Building in Av. Casal Ribeiro, 16	Propósitos e Razões	Coordination, Procurement and Supervision of Works	8,0 M€	4 100	sqmt	under construction	Lisbon
Teleperformance Building in Expo	UPI Oriente	Coordination and Supervision of Works	52,8 M€	40 732	sqmt	under construction	Lisbon
Auchan Headoffice Paço de Arcos	Auchan	Coordination and Supervision of Works	17,9 M€	10 000		2020	Paço de Arcos
Building in J Queirós, 1	SplitBurgo	Coordination and Supervision of Works	4,7 M€	13 500	sqmt	2019	Moscavide
Building in Dq Ávila, 79	Sogestão	Coordination and Supervision of Works	4,5 M€	5 300	sqmt	2019	Lisbon
Palácio do Comércio Building	Tabnit, SA	Coordination and supervision of works	13,7M€	15 900	sqmt	2019	Porto
Building in 24 de Julho	WPP	Coordination and Supervision of Works	4,0 M€	7 200	sqmt	2018	Lisbon
Office Building in Boavista	Atitlan, SA	Coordination and works supervision	1,4 M€	8 900	sqmt	2017	Porto
Microsoft Headquarters	Microsoft	Coordination and Supervision of Works	4,6 M€	6 211	sqmt	2012	Lisbon
GALP Energia Headquarters Towers A and C	GALP Energia	Coordination and Supervision of Works	7,5 M€	4 800	sqmt	2011	Cascais
Axa Seguros de Portugal Headquarters	Axa Seguros	Coordination and Supervision of Works	3,5 M€	5 000	sqmt	2011	Lisbon
Campus Logoplaste	Logoplaste	Coordination and Supervision of Works	7,5 M€	4 800	sqmt	2010	Cascais
Banco BIC (refurbishing) Headquarters	Banco BIC	Coordination and Supervision of Works	0,6 M€	2 000	sqmt	2008	Lisbon



PORTFOLIO

Office Buildings

OFFICE BUILDINGS	Clients	Provided Services	Value	Gross building area (above)		Year of conclusion	Location
Alfrapark	Grupo SGC	Coordination and Supervision of Works	35,0 M€	30 575	sqmt	2007	Amadora
InterRepública Building	Grupo Refer EP	Coordination and Supervision of Works	8,0 M€	6 500	sqmt	2005	Lisbon
Building in Avenida Liberdade, 190	Arie e Filhos	Coordination and Supervision of Works	6,0 M€	6 265	sqmt	2005	Lisbon
Logoplaste Headquarters	Garrett Prop (Logoplaste)	Coordination and Supervision of Works	3,0 M€	3 600	sqmt	2004	Cascais
Praça de Espanha Office Centre	Limóvel (Amorim Imob) BNC	Coordination and Supervision of Works	30,0 M€	56 400	sqmt	2003	Lisbon
Sintra Business Park	Amorim Imobiliária	Coordination and Supervision of Works	28,0 M€	53 000	sqmt	2003	Sintra
Arquiparque Tower 5	MDC	Coordination and Supervision of Works	10,5 M€	14 000	sqmt	1998	Oeiras
Building in Av. da República, 23	Grupo Bullfighter	Coordination and Supervision of Works	2,0 M€	2000	sqmt	1997	Lisbon
G. Teles Advogados Associados Offices	GTAA	Coordination and Supervision of Works	0,3 M€	300	sqmt	1997	Lisbon
Carnaxide office Centre	Pujol	Coordination and Supervision of Works	1,3 M€	5 600	sqmt	1996	Oeiras
L'Oreal Oporto Offices	Sincoral	Coordination and Supervision of Works	0,3 M€	200	sqmt	1996	Porto
Building in Av. António Augusto Aguiar, 128	Grupo Bullfighter	Coordination and Supervision of Works	2,5 M€	3000	sqmt	1995	Lisbon
Taurus Building in Campo Pequeno	Grupo Bullfighter	Coordination and Supervision of Works	4,0 M€	3500	sqmt	1993	Lisbon
L'Oreal Arquiparque Offices	Sincoral	Coordination and Supervision of Works	2,5 M€	4000	sqmt	1993	Oeiras
			Total area	395 441	sqmt		



PORTFOLIO

Residential

RESIDENTIAL	Client	Services provided	Cost	Gross building area (above)		Observations	Completion	Location
Rua do Ouro	Optylon	Coordination and supervision of works		1 590	sqmt	Refurbishment of existing building	under construction	Lisbon
Pateo Salema	Habitat Project	Coordination and supervision of works	4,5 M€		sqmt	Construction of 30 apartments	under construction	Lisbon
Quinta do Pinheiro	Montepio	Coordination and supervision of works		14 013	sqmt	Construction of 117 apartments	under construction	Oporto
Kronos Homes, Parcela 200	Kronos Investment Group	Coordination and supervision of works		9 010	sqmt	Construction of 3 buildings	under construction	Lisbon
Distrikt Homes	Kronos Investment Group	Coordination and supervision of works			sqmt	Construction of 4 buildings in a gated community	under construction	Lisbon
Marquês de Abrantes	Habitat Project	Coordination and supervision of works	5,0 M€	2 860	sqmt	Demolition and new construction	under construction	Lisbon
Dispensário Rainha D. Amélia	Keystone	Coordination and supervision of works		3 546	sqmt	Refurbishment of existing building	under construction	Lisbon
Silva Amado Palace at Campo Mártires da Pátria	IPOBI Lisboa	Coordination and supervision of works	11,3 M€	6 752	sqmt	Refurbishment of existing building with 11 luxury apartments and a single-family villa	under construction	Lisbon
Infinity Sky Tower building in Campolide	CGD/VGPT II	Technical supervision		46 750	sqmt	Construction of building of 26+4 floors with 195 apartments	under construction	Lisbon
Building at Rua do Desterro 31	UPI	Coordination and supervision of works	5,0 M€	3 500	sqmt	Construction of building with 6 floors, 24 apartments, a recreation area, garden and pool	under construction	Lisbon
Building at Av. João XXI 59	Kronos	Coordination and supervision of works	14,5 M€	8 161	sqmt	Construction of 8+3 floors residential and commercial building with 58 apartments and shops	under construction	Lisbon
Development in Quinta do Picadeiro	Avenue	Coordination and supervision of works	60 M€	11 500	sqmt	Construction of 20 semi-detached villas and refurbishment of 2 existing buildings	under construction	Cascais
Building at Rua da Esperança 116-126	Domeinvest	Coordination and supervision of works	2,8 M€	1 450	sqmt	Refurbishment of existing building with 9 apartments and 2 shops	under construction	Lisbon
O'Living in Quinta dos Candeeiros	Mexto	Coordination and supervision of works	15 M€	11 216	sqmt	Construction of residential and commercial development of 8+1 floors	under construction	Lisbon
Metropolis - Lumiar refurbishment	Norfim	Coordination and supervision of works	107,5 M€	80 000	sqmt	Construction of 8 buildings with 220 apartments, offices and shops	under construction	Lisbon
Building at Travessa do Fala Só 18-20	UPI	Procurement, coordination and supervision of works	2,6 M€	1 500	sqmt	Refurbishment of existent building	under construction	Lisbon
Prateato Project	FFA Real Estate	Coordination and supervision of works	9,7 M€	5 300	sqmt	Construction of enterprise with 52 appartments	under construction	Braço de Prata
Building in Rua do Alecrim, 53	Vivium Properties	Coordination and supervision of works		1 750	sqmt	Refurbishment of existing building	under construction	Lisbon
Alcântara Lofts	Fortune River	Procurement, coordination and supervision of works	3,0 M€	1 178	sqmt	Refurbishment of existing building	under construction	Lisbon
Building in Largo do Regedor	Plateia do Aplauso	Procurement, coordination and supervision of works	4 M€	1 900	sqmt	Refurbishment of existing building	under construction	Lisbon



PORTFOLIO

Residential

RESIDENTIAL	Client	Services provided	Cost	Gross building area (above)		Observations	Completion	Location
Building in Rua Rodrigo da Fonseca, 43	Mexto	Coordination and supervision of works	5,0 M€	2 118	sqmt	Enlargement and reconstruction of building	under construction	Lisbon
Building in Rua dos Douradores	Dynamic Vanilla	Coordination and supervision of works	2,0 M€	1 581	sqmt	Refurbishment of an existing building	under construction	Lisbon
Beato Project	Distinctability	Coordination and supervision of works	2,3 M€	23 865	sqmt	Refurbishment of an existing building	under construction	Lisbon
Building in Rua S. Francisco Borja, 22-24	Gracious Satellite	Procurement, coordination and supervision of works	2,3 M€	1 168	sqmt	Refurbishment of existing building	under construction	Lisbon
Quinta de São Marcos	Veiga de Mago	Coordination and works supervision	6.3 M€	3 700	sqmt	construction of enterprise with 34 appartments and 4 villas	under construction	Vila Nova de Gaia
Building in Largo do Rato, 11	Rato Eleven	Coordination and supervision of works	14,0 M€	5 540	sqmt	Refurbishment of existing buildings	under construction	Lisbon
Miraflores Building	COM-ECP XVI	Procurement, coordination and supervision of works	6,0 M€	5 500	sqmt	Refurbishment of existing enterprise	stopped	Lisbon
Vilamoura Uptown	Vilamoura Lusotur	Coordination and supervision of works	22,0 M€	12 625	sqmt	Enterprise construction with 134 properties	2021	Algarve
Vilamoura Central	Vilamoura Lusotur	Coordination and supervision of works	21,6 M€	13 213	sqmt	Enterprise construction	2021	Algarve
Building "The Nest" in Rua Rodrigo da Fonseca, 11	Flamingo Corner	Coordination and supervision of works	4,2 M€	2 443	sqmt	Building Construction	2020	Lisbon
Building in Rua de Ponta Delgada, 21-27	Paula Gomes Freire	Procurement, coordination and supervision of works	4,0 M€	1 960	sqmt	Construction of building and two single-families houses	2020	Lisbon
Luz Soriano	Lercoul	Coordination and supervision of works	3,6 M€	2 887	sqmt	Refurbishment of a existing building	2020	Lisbon
Gomes Freire 18	Louvre Capital	Coordination and supervision of works	4,9 M€	3 200	sqmt	Refurbishment of a existing building	2019	Lisbon
Building in Rua Vítor Cordon, 34-38	Tan Investments	Coordination and supervision of works	3,5 M€	1 910	sqmt	Refurbishment of an existing building	2019	Lisboa
Rua da Esperança, 2-4	Hermitage	Coordination and supervision of works	0,48 M€	600	sqmt	Refurbishment of a existing building	2019	Lisboa
Artilharia Um	Avenue	Coordination and supervision of works	3,0 M€	2 875	sqmt	Refurbishment of a existing building	2019	Lisbon
Unifamiliar Villa - Algarve #2	Particular	Coordination and supervision of works	2,9	1 313	sqmt	Demolition and new construction	2019	Loulé
Santa Justa	Oplylon	Coordination and supervision of works	1,25 M€	1 000	sqmt	Refurbishment of a existing building	2019	Lisbon
Victor Cordon, 19	The Cordon	Coordination and supervision of works	2,0 M €	1 400	sqmt	Refurbishment of a existing building	2019	Lisbon



PORTFOLIO

Residential

RESIDENTIAL	Client	Services provided	Cost	Gross building area (above)		Observations	Completion	Location
Unifamiliar Villa - Algarve	Rbr Estate Investments, SA	Coordination and supervision of works	1,40 €	983		completion of existing villa	2019	Vilamoura
Damasceno Monteiro	Frontcity	Coordination and supervision of works	1,0 M €	1 212	sqmt	Refurbishment of a existing building	2019	Lisbon
Cedofeita Homes	Capricereference	Coordination and works supervision	3,2 M€	2 562	sqmt	refurbishment	2019	Porto
Rua do Cabo Simão Building	Galaxitroféu, Ida	Coordination and supervision of works	0,2 M€	300	sqmt	4 apartments - refurbishment	2018	Porto
Residential and Commercial Building in Av. Rodrigues de Freitas	Frontcity	Coordination and works supervision				refurbishment	2017	Porto
Janelas Verdes Building	FollowWhisper	Coordination and supervision of works	2,45 M€	1 650	sqmt	Refurbishment of a existing building	2017	Lisbon
Villa in Restelo	Dr. Manuel Ferreira	Coordination and supervision of works	1,0 M€	585	sqmt	Luxury Villa	2017	Rua Antão Gonçalves - Lisbon
Palacete Garcia da Horta	Jonh Harald ORNEBERG	Coordination and supervision of works	1,5 M€	720	sqmt	Luxury Villa	2016	Lisbon
Liberdade, 238	Liberoito	Coordination and supervision of works	5,75 M€	5 200	sqmt	24 luxury apartments + shops	2016	Lisbon
Duque de Palmela, 21	EMGI	Coordination and supervision of works	2,59 M€	2 459	sqmt	13 apartments and underground parking	2016	Lisbon
Restauradores, 53	EMGI	Coordination and supervision of works	1,8 M€	1 950	sqmt	21 apartments	2016	Lisbon
República, 37	EMGI	Coordination and supervision of works	6,0 M€	6 000	sqmt	27 apartments and 32 parking places	2016	Lisbon
Building Sirius Areeiro in Av. Gago Coutinho	Euroimobiliária	Coordination and supervision of works		5 300	sqmt	24 apartments	2009	Lisbon
Condessa do Rio (Cond. Santa Catarina)	Grupo Inland	Coordination and supervision of works	5,0 M€	5 200	sqmt	19 apartments and 2 stores	2009	Lisbon
Convento dos Inglesinhos	Chamartin Imobiliaria	Coordination and supervision of works	12,0 M€	11 400	sqmt	29 apartments and church	2008	Lisbon
S. João da Mata	Mailtec / Skadi	Coordination and supervision of works	4,5 M€	12 000	sqmt	12 apartments	2005	Lisbon
Building Alto do Parque	Temple	Coordination and supervision of works	35,0 M€	20 923	sqmt	82 apartments	2005	Lisbon
Belas Country Club - Plots 3 to 9	Planbelas	Coordination and supervision of works	34,4 M€	26 000	sqmt	125 apartments	1999	Belas
Milénio Building in Av. Duque de Ávila	Soprocine	Coordination and supervision of works	11,2 M€	20 000	sqmt		1998	Lisbon
			Total area	393 699	sqmt			



PORTFOLIO

Shopping Centers

SHOPPING CENTRES	Client	Services provided	Cost	Gross building area (above)		Observations	Completion	Location
Alegro Setúbal	Auchan	Coordination and supervision of works	60,0 M€	125 000	sqmt	115 stores, 2300 parking places	2014	Setúbal
Forum Sintra	MDP (MDC)	Coordination and supervision of works	40,0 M€	119 000	sqmt	In consortium. 2800 parking places. 160 stores	2010	Sintra
Barreiro Retail Planet	Eiffage	Coordination and supervision of works	23,0 M€	69 000	sqmt (ABL)	53 stores, 1700 parking places	2010	Barreiro
1.º Maio Market	MDC / CM Barreiro	Coordination and supervision of works	6,0 M€	7 240	sqmt	240 parking places	2009	Barreiro
Stand Alone Almada Forum	MDC	Coordination and supervision of works	5,0 M€	11 000	sqmt		2008	Almada
Forum Barreiro	MDP (MDC)	Coordination and supervision of works	27,0 M€	17 500	sqmt	126 stores, 5 cinemas, 700 parking places	2008	Barreiro
Shopping Gallery of the airport of Lisbon (commercial area)	ANA Aeroportos	Coordination and supervision of works	5,0 M€	19 000	sqmt	27 stores	2008	Lisboa
Shopping Gallery of the airport of Lisbon (aerogare covering restaurant's old pavement)	ANA Aeroportos	Coordination and supervision of works	0,1 M€				2008	Lisboa
Dolce Vita Tejo	Espaço Urbano (Chamartin)	Coordination and supervision of works	180,0 M€	425 000	sqmt	279 stores, 9000 parking places	2007	Amadora
Dolce Vita Monumental (remodelação)	Monumental (Chamartin)	Coordination and supervision of works	1,5 M€	5 685	sqmt (ABL)	36 stores, 350 parking places	2007	Lisboa
Dolce Vita Miraflores (renovação)	Amorim Imobiliária	Coordination and supervision of works	6,0 M€	10 000	sqmt	65 stores, 300 parking places	2003	Oeiras
Almada Forum	MDC	Project management	125,0 M€	250 000	sqmt	260 stores, 5050 parking places	2003	Almada
Forum Algarve	MDC	Coordination and supervision of works	40,0 M€	110 000	sqmt	120 stores, 2300 parking places	2002	Faro
Armazéns do Chiado	MDC	Engineering projects		20 840	sqmt	41 stores e 40 hotel rooms	1999	Lisboa
Forum Aveiro	MDC	Design and Technical Consulting		17 500	sqmt	76 stores and 2 underground parking floors	1997	Aveiro
			Total	1 206 765	sqmt			

PORTFOLIO

Student Residences

STUDENTS RESIDENCES	Client	Services provided	Cost	Gross building area (above)		Observations	Completion	Location
Student Residence in Coimbra	Temprano	Coordination and supervision of works	16,2 M€	11 866	sqmt	conversion of existing building into student residence	2021	Coimbra
Student Residence in Agramonte, Boavista, Oporto	WPC	Coordination and supervision of works	14,0 M€	16 000	sqmt	construction of student residence	2020	Oporto
Student Residence in Rua Sousa Lopes, Lisbon	Temprano	Design, Procurement, coordination and supervision of works	23,0 M €	23 000	sqmt	construction of student residence	2020	Lisbon
Student Residence in Asprela, Oporto	CSH Porto 2 unip Ida	Coordination and supervision of works	26,74 M€	15 500	sqmt	construction of student residence	2019	Oporto
Equipment of the Student Residence in Marquês do Pombal, Lisbon	Temprano/PCarey	Coordination and works supervision	9,5 M€	11 000	sqmt	equipment of student residence	2019	Lisbon
				65 500	sqmt			

Special Buildings

SPECIAL BUILDINGS	Client	Services provided	Cost	Gross building area (above)		Observations	Completion	Location
Infrastructures in Herdade dos Salgados and São Rafael	Nauhotels	Coordination and works supervision				Conclusion of infrastructures and demolitions	2018	Algarve
João Rocha Pavillion	Sporting Club de Portugal	Coordination and works supervision	7,5 M €	10 000	sqmt	Sport Palivion of 3000 seats	2018	Lisbon
Infrastructures Praia d'el Rey	Massa Insolvente Crissier	Coordination and supervision of works	9,5 M €			infrastructures	2016	Praia d'El Rey
Governador Hotel's Parking Lot	Gavepart II	Procurement, Coordination and Supervision				construction of parking lot	2015	Belém
Jardim do Arroz	Obriverca	Coordination and supervision of works				Library	2015	Vila Franca de Xira
Grupo Leya's Head Office	Grupo Leya	Coordination and supervision of works	4,0 M€	4 500	sqmt		2007	Carnaxide
				14 500	sqmt			



PORTFOLIO

Restaurants

Education

Health

RESTAURANTS	Client	Services provided	Cost	Gross building area (above)		Observations	Completion	Location
Kabuki Restaurant in the Hotel Ritz Galeries	Sidercom Group	Coordination and supervision of works			sqmt	restaurant construction	2021	Lisbon
Pinoquio's Restaurant	J.J. Sousa	Coordination and supervision of works	0,5 M€	400	sqmt	restaurant construction	2021	Lisbon
Palácio Chiado Restaurant	ADG	Coordination and supervision of works	0,5 M€	800	sqmt	142 places	2016	Lisbon
Pátio do Avillez Restaurant	Grupo Avillez	Coordination and supervision of works	1,5 M€	1 200	sqmt		2016	Lisbon
Ice Cream Shops	Santini	Coordination and supervision of works				5 shops	2016	Lisbon, Porto, Estoril, Cascais
				2 400	sqmt			

EDUCATION	Client	Services provided	Cost	Gross building area (above)		Observations	Completion	Location
Os Belenenses, British School of Lisbon	The Schools Trust	Coordination and works supervision			sqmt		in design stage	
Kings College	Inspired	Coordination and works supervision			sqmt		in design stage	Cascais
Elementary School Bairro S. Miguel (renovation)	CM Lisboa	Coordination and works supervision	1,8 M€	7 730	sqmt	capacity for 416 pupils	2018	Lisboa
Elementary School 1/II in Vila Chã	CM Amadora	Coordination and supervision of works	3,0 M€				2009	Amadora
Secondary School D. Dinis (renovation)	Parque Escolar	Coordination and supervision of works	9,5 M€	8 800	sqmt		2008	Lisbon
				16 530	sqmt			

HEALTH	Client	Services provided	Cost	Gross building area (above)		Observations	Completion	Location
Continued Care Unit in Carnaxide	Instituto S. João de Deus	Coordination and supervision of works	12,0 M€	4 855	sqmt	medical clinic construction	2022	Carnaxide
Lusíadas Hospital	Hospital dos Lusíadas	Coordination and supervision of works	1,9 M€	1 500	sqmt	extension of the Hospital	2017	Lisbon
Hospital Central do Algarve	Ministry of Health	Coordination and supervision of works	120,0 M€	140 000	sqmt		2008	Faro
Lotus Clinic (Unimed Cascais)	GP Saúde	Coordination and supervision of works	12,0 M€	13 500	sqmt	4 OR, 40 medical offices, 210 parking places	2007	Cascais
				159 855	sqmt			



PORTFOLIO

Golf Clubs

GOLF CLUBS	Client	Services provided	Cost	Gross building area (above)		Observations	Completion	Location
EQ1 Building	Quinta da Ombria	Coordination and supervision of works		695	sqmt	golf maintenance building	In progressso	Loulé
Golf Club Quinta da Ombria	Quinta da Ombria	Coordination and supervision of works	7,6 M€	2 660	sqmt		2018	Loulé
Golf and Club House Praia d'el Rey	Priority Goal	Coordination and supervision of works	5,0 M€	220 000	sqmt		2017	Óbidos
Residence Golf Club		Coordenação e Fiscalização	26,0 M€	31 400	sqmt		2005	Vilamoura
				254 755	sqmt			

Venues

Bank Agencies

VENUES	Client	Services provided	Cost	Gross building area (above)		Observations	Completion	Location
Armazém 27	Venue	Procurement, Coordination and Supervision				construction of concert hall for 15.600 people	stopped	Santos
NOS Alive 2019	Everything is New	Project Analysis and Supervision of Works				staging and disassembling of structures	2019	Algés
NOS Alive 2018	Everything is New	Project Analysis and Supervision of Works				staging and disassembling of structures	2018	Algés
Aberto Theatre	Amorim Imob / CML	Coordination and supervision of works	9,0 M€	6 500	sqmt		2001	Lisbon
				6 500	sqmt			

BANK AGENCIES	Client	Services provided	Cost	Gross building area (above)		Observations	Completion	Location
Bank of China Headquarters and Branch	Bank of China	Coordination and Supervision of Works	0,6 M€	680	sqmt		2013	Lisbon
Banco Popular	Banco Popular	Coordination and supervision of works				27 branch	2008	Portugal
Banco BIC	Banco BIC	Coordination and supervision of works				8 branch	2008	Portugal
Banco BPA	Cinclus	Coordination and supervision of works	2,0 M€			8 branch	1992	Lisbon
				680	sqmt			



PORTFOLIO

Industry

Stores

INDUSTRY	Client	Services provided	Cost	Gross building area (above)		Observations	Completion	Location
Industrial Building	Tryba / Caixiave	Coordination and supervision of works	18,0 M€	44 000	sqmt	construction of industrial building	under construction	Famalicão
Warehouse in Azambuja	Difusão	Coordination and supervision of works	22,3 M€	26 681	sqmt	construction of logistic warehouse and heavy vehicles parking lot with 74 spots	2020	Azambuja
A Padaria Portuguesa	A Padaria Portuguesa	Coordination and supervision of works	3,0 M€	4 025	sqmt	Pastry Factory	2017	Lisbon
Ice Cream Factory	Santini	Coordination and supervision of works	0,9 M€	1 000	sqmt	Refurbishment of a factory space	2015	Carcavelos
Rebranding gas units Galp PT	Galp Energia	Coordination and supervision of works				77 units	2009	Portugal
Rebranding gas units Galp ES	Galp Energia	Coordination and supervision of works	6,0 M€			174 gas stations	2009	Espanha
Ham Factory Barrancarnes	Amorim Indústria	Coordination and supervision of works	5,2 M€	8 500	sqmt		2006	Barrancos
Barrancarnes - Barrancos	Amorim Indústria	Coordination and supervision of works	2,0 M€				2005	Barrancos
Cork Factory	Corticeira Amorim	Coordenação e Fiscalização						Ponte de Sor
				84 206	sqmt			

STORES	Client	Services provided	Cost	Gross building area (above)		Observations	Completion	Location
Mercauto of Sete Rios	Santogal M	Coordination and supervision of works	1,4 M€	4 043	sqmt	Stand and garage refurbishment	under construction	Lisbon
Stand Santogal in Tagus Park	Santogal Imobiliária	Coordination and supervision of works				Stand and garage construction	2022	Lisbon
Auchan of Paços de Arcos	Auchan	Coordination and supervision of works	20,0 M€	15 000	sqmt	Construction of hypermarket and head office	2020	Paço de Arcos
Building in Abuxarda	C. Santos	Procurement, coordination and supervision of works				Building construction	2019	Cascais
Stand Santogal in Alfragide	Santogal Imobiliária	Coordination and supervision of works	2,1 M€	6 044	sqmt	Stand refurbishment	2019	Lisbon
Auchan of Penha de França	Auchan	Coordination and supervision of works				Reconversion of commercial space	2018	Lisbon
				25 087	sqmt			



PORTFOLIO

Due Diligences

DUE DILIGENCES	Client	Observations	Date
Quinta do Mar	Aedes	cost estimate	in progress
Cinco District	Pinebridge	due diligence	in progress
Bom Sucesso Porto	Ares	due diligence	in progress
Granja Colombo	Ares	due diligence	in progress
Student Residences	Bream Real Estate	due diligence	in progress
Avenida Brasil, Cascais	Aslan Khabliev	due diligence	in progress
Retail Stands Alones	Lead Crests	due diligence	2021
Belvedere	Legendre	due diligence	2021
Porto Pacifico	BNPP RE	due diligence	2021
Belas Lote 4	Besix Red / Bondstone	due diligence	2021
Student Residences	Catella AM Iberia	due diligence	2021
Holiday Inn Porto	DK Davidson Kempner CM	due diligence	2021
Hilton Porto Gaia	DK Davidson Kempner CM	due diligence	2021
Morgado Golf & Country Club	DK Davidson Kempner CM	due diligence	2021
Salgados Duna Palaca S Rafael	DK Davidson Kempner CM	due diligence	2021
Colombos Resort	DK Davidson Kempner CM	due diligence	2021
Cascade Resort	DK Davidson Kempner CM	due diligence	2021
Hotel Governador	DK Davidson Kempner CM	due diligence	2021
Land in Telheiras	Kronos	due diligence	2021
Street Julio Dinis 604	Fonseca & Cramez	due diligence	2021
Funds from Imocar	Norfim	due diligence	2020
Florence Novoli	Temprano	due diligence	2020
Building in Rua Capitão Roby 76	Norfim	due diligence	2020
Lote 47 at Areiro	Norfim / AGG Capital Management	due diligence	2020
Building in Rua Sant'ana à Lapa	Arq. António Alho	due diligence	2020
Hotel W Algarve	Norzul Algarve	due diligence	2020
Building in Rua do Proletaria 15	C. Santos	due diligence	2020
Colombo's North Tower	Temprano / Benson Elliot	due diligence	2020
Stretch 1 of the Oriental Highway of Cascais and Rehabilitation of the River Bank of Sassoeiros	El Corte Inglés	project analysis and licensing management	2020
Herdade Morgado do Reguengo, Hotel do Lago and Appartment Building	ECS Capital	project analysis and procurement	2020



PORTFOLIO

Due Diligences

DUE DILIGENCES	Client	Observations	Date
Building in Largo da Anunciada, Portas de Santo Antão	EPAL	project analysis	2020
Metropolis	Norfin	due diligence	2020
Loja das Meias in Av. da Liberdade	Nazareth & Calleia, Lda.	accoustic project and evaluation	2019
Pestana Vila Sol Hotel in Vilamoura	Webcor Group	due diligence	2019
Project Pine	Norfin	due diligence	2019
C. Santos in Rua do Proletariado	C. Santos VP	due diligence	2018
Troia Design Hotel	Amorim Turismo	inspeccion	2018
Swimming-pool	Cláudia Azevedo Carvalho	technical report	2018
Vodafone Space in Oporto	Vodafone	due diligence	2018
Building in Expo		due diligence	2018
Forum Castelo Branco	Temprano Capital Partners	due diligence	2018
Pateo Bagatela Rua Artilharia 1	Webcor Group	due diligence	2018
Chancellery of the Embassy of Brazil	Brazil's Embassy	due diligence	2018
Corpus Christi Building	Optylon	consultancy	2017
Building Rossio - Rua 1º Dezembro, 40	EMGI	due diligence	2017
Ibis Guimarães	Creixomil	due diligence	2016
Building in Oeiras	Temprano	cost estimate	2015
Building Av. República, 55	EMGI	due diligence	2015
Building Praça Restauradores, 53 a 57	First Investor	DD of an old building to be recovered	2014
Av. Liberdade , 40	L40 Real Estate	DD of an old building to be recovered	2014
Avenida da República, 37	First Investor	DD of an old building to be recovered	2014
Praça dos Restauradores	Cbre	DD of an old building to be recovered	2013
Penina Hotel and Golf	ECS Group	DD – Technical Survey	2013
Sesimbra Hotel & Spa	ECS Group	DD – Technical Survey	2013
“Do Lago” Hotel in Montargil	CS Hotels & Resorts	DD – Technical Survey	2013
Building “Pavilhão Virtual – Expo 8”	Microsoft Portugal	DD – Refurbishment	2011
Building “Sony – Expo 98”	Axa Insurance Co	DD - Refurbishment	2010
Group Vigia Projects in Algarve	Aequitatae	DD – Technical Survey	2010
Monumental Shopping Center	Amorim Group	DD – Technical Survey	2007
Picoas Plaza Shopping Center	Amorim Group	DD – Technical Survey	2007



Rua Armando Cortez, 1, 4.º A | 2770-233 Paço de Arcos

217 995 790 | ficope@ficope.pt | www.ficope.pt